



bel etage





Detaillierte Beschreibungen der Objekte finden Sie in Deutsch und Englisch auf unserer Webseite [www.beletage.com](http://www.beletage.com).  
Wir senden Ihnen diese auf Anfrage gerne per Post oder E-Mail zu.  
Sämtliche Maßangaben sind ungefähre Angaben und dienen der Information.

Detailed descriptions of the objects presented in this catalogue are available for download in German and English from our website [www.beletage.com](http://www.beletage.com).  
Upon request, we will also be pleased to send you these descriptions by post or email.  
All measurements are approximate and for information only.

bel etage

Die Deutsche Nationalbibliothek verzeichnet diese Publikation in der Deutschen Nationalbibliografie.  
The German National Library lists this publication in the German National Bibliography.

## IMPRESSUM/IMPRINT

Herausgeber/Publisher: bel etage Kunsthandel GmbH, Wien/Vienna  
Konzeption und Organisation/Conception and organisation: Wolfgang Bauer  
Objektbeschreibungen, Experte/Object descriptions, expert: Wolfgang Bauer  
in Zusammenarbeit mit/in cooperation with: Madeleine Jedlicka BA, Mag. Agnes Prosch  
Übersetzung/Translation: Tim Sharp, Mag. Sabine Hübler  
Lektorat/Proofreading: Mag. Sabine Hübler  
Fotos/Photos: August Lechner, Wien  
Grafische Gestaltung/Graphic design: August Lechner, Wien  
Herstellung/Print: Druckerei Berger, Horn  
Alle Rechte vorbehalten/All rights reserved  
© bel etage, Wien 2020  
ISBN-978-3-902117-36-6  
Titelseite/Front cover: Cat. No. 59. G. BAUDISCH  
Rückseite/Back cover: Cat. No. 1. G. KLIMT

bel etage

WOLFGANG BAUER

MASTERPIECES BEL ETAGE SPRING 2020

VERKAUFS-AUSSTELLUNG IN BEIDEN GALERIEN  
7. MÄRZ – 9. MAI 2020

EXHIBITION AND SALE OF WORKS OF ART IN BOTH GALLERIES  
7 MARCH – 9 MAY 2020

bel etage

A-1010 Vienna, Mahlerstraße 15

Wolfgang Bauer, Kunsthandel GmbH, phone: +43/1/512 23 79, fax: ext. 99, office@beletage.com, www.beletage.com

dorotheergasse 12

A-1010 Vienna, Dorotheergasse 12





**GEORG KLIMT**  
1867 – Vienna – 1931



**1. RELIEF PANEL "ALLEGORY OF MUSIC"**

**Designed and executed by:** Georg Klimt, Vienna, around 1900  
**Signed:** GEORG KLIMT

Copper, chased, blue glass cabochons, very beautiful original patina, excellent original condition

**24 x 24 cm**

Provenance: private property, Austria

**HENRY VAN DE VELDE attr.**  
Antwerp 1863 – 1957 Zurich



## 2. BILLARD TABLE

Designed by: Henry van de Velde attr., around 1898

Mahogany solid, carved, polished, mother-of-pearl inlays, slate (top),  
green billiard cloth and reddish-brown ball pockets renewed, very beautiful original condition

H 80 cm, W 250 cm, D 140 cm  
Playing surface: 220 x 110 cm

Provenance: private property, Belgium; art trade Brussels; private property, Germany



Detailed descriptions of the objects presented in this catalogue are available for download in German and English from our website [www.beletage.com](http://www.beletage.com). Upon request, we will also be pleased to send you these descriptions by post or email. All measurements are approximate and for information only.

LÖTZ WITWE  
E. BAKALOWITS SÖHNE



### 3. VASE WITH GILT BRASS MOUNT

**Executed by:** Lötzwitwe, Klostermühle, around 1900

**Décor:** Phänomen Gre 299, Tricolor

Transparent glass, Candia ground, blue, green and pink, scattered oil spots, gilt brass mounting, gilding rubbed in places, very nice condition

**H 29 cm**

**Provenance:** private property, Germany

Ref.: <https://www.loetz.com/decors-a-z/phaenomen-genres/phaenomen-genres/pg-299> (accessed December 19, 2019)

LÖTZ WITWE  
E. BAKALOWITS SÖHNE



#### 4. VASE WITH GILT BRASS MOUNT

Executed by: Lötze Witwe, Klostermühle, around 1900

Décor: Phänomen Gre 299, Tricolor

Transparent glass, Candia ground, blue, green and pink, scattered oil spots, gilt brass mounting, gilding rubbed in places, very nice condition

H 26 cm

Provenance: private property, Germany

Ref.: <https://www.loetz.com/decors-a-z/phaenomen-genres/phaenomen-genres/pg-299> (accessed December 19, 2019)

**FRANZ HOFSTÖTTER**  
Munich 1871 – 1958 Bachern  
**LÖTZ WITWE**



**5. VASE**

**Designed by:** Franz Hofstötter (probably also décor), 1900

**Executed by:** Lötž Witwe, Klostermühle

**Décor:** metallgelb Phänomen Gre 358

**Shape:** 1900, prod. no. II-353

**Signed:** Loetz Austria (engraved on base)

Colourless glass cased in opalescent glass, base with dark red-brown band, salmon-red mouth, bulbous metallic-yellow side, the whole covered with various trailed silver-yellow bands

**H 8.5 cm**

**Provenance:** private property, USA

Ref.: J. Mergl/E. Ploil/H. Ricke, Lötž, Böhmisches Glas 1880–1940, Hatje Cantz Verlag, 2003, p. 83 ff; J. Lněničková, Loetz, Series II, Paper Patterns for Glass from 1900 to 1914, 2011, p. 65 (paper pattern)

**FRANZ HOFSTÖTTER**  
Munich 1871 – 1958 Bachern  
**LÖTZ WITWE**



**6. VASE**

**Designed by:** Franz Hofstötter (probably also décor), 1900

**Executed by:** Lötž Witwe, Klostermühle

**Décor:** metallgelb Phänomen Gre 358

Colourless glass cased in opalescent glass, base with dark red-brown band, salmon-red mouth, bulbous metallic-yellow side, the whole covered with various trailed silver-yellow bands

**H 24 cm**

**Provenance:** private property, Germany

Ref.: J. Mergl/E. Ploil/H. Ricke, Lötž, Böhmisches Glas 1880–1940, Hatje Cantz Verlag, 2003, p. 83 ff



7. VASE

Executed by: Lötz Witwe, Klostermühle, around 1902  
Décor: Argus (Phänomen Gre 2/351)

Transparent glass, irregular silver-blue splashes and threads, multi-colour iridescent, excellent condition

H 12.5 cm  
Provenance: private property, Germany

Ref.: comp. décor: H. Ricke (ed.), Lötz, Böhmisches Glas 1880–1940, Munich, 1989, vol. 1, p. 157





## 8. A PAIR OF VASES

Executed by: Lötž Witwe, Klostermühle, around 1902

Décor: Argus maron (Phänomen Gre 2/351)

Shape: 1902, prod. no. 2/460

Transparent glass, irregular silver-blue splashes and threads, multi-colour iridescent, excellent condition

H 24.5 cm

Provenance: private property, USA and Austria

Ref.: H. Ricke (ed.), Lötž, Böhmisches Glas 1880–1940, Munich, 1989, vol. 1, p. 325, vol. 2, p. 128 (paper pattern)



# ADOLF LOOS

Brno 1870 – 1933 Kalksburg near Vienna

## FRIEDRICH OTTO SCHMIDT



### 9. "ELEPHANT TRUNK" TABLE

**Designed by:** Adolf Loos, Max Schmidt, master craftsman Berka, Vienna, around 1900

**Executed by:** Friedrich Otto Schmidt

Eight-legged variant, solid mahogany and veneer, trunk legs carved out of solid mahogany, surface partially dyed to rosewood and professionally repolished, original copper fittings, renewed marble top with fossil inclusions of ammonites and belemnites, excellent condition

Excellent Viennese cabinet making

H 65 cm, Ø 87 cm

Provenance: private property, Germany

Ref.: E. B. Otthillinger, Adolf Loos, Wohnkonzepte und Möbelentwürfe, Vienna, 1994, p. 154, cf. ill. pp. 46, 57; Das Interieur, 1903, p. 14

**ADOLF LOOS attr.**  
Brno 1870 – 1933 Kalksburg near Vienna  
**FRIEDRICH OTTO SCHMIDT**



**10. DRAWING ROOM TABLE**

**Designed by:** Adolf Loos, Vienna, around 1905

**Executed by:** Friedrich Otto Schmidt, Vienna

Solid mahogany and veneer on pine, surface slightly cleaned, retouches and repolished, solid copper fittings polished, ceramic tiles, glass on top, very good condition

H 65 cm, Ø 88 cm

Sincere thanks to Péter Rostás and Mr. Klaus Lorenz from the company Friedrich Otto Schmidt in Vienna for their friendly help and for providing us with the documentation.

Provenance: private property, Vienna

Ref.: company archives of Friedrich Otto Schmidt, no. 395; E. B. Otfillinger, A. Loos, Wohnkonzepte und Möbelentwürfe, Vienna, 1994, p. 156, p. 159, ill. 227; G. Fahr-Becker, Jugendstil, 2007, p. 357, P. Rostás, Mágánások Lakberendezője, 2010, p. 228





11. VASE

Executed by: Lötze Witwe, Klostermühle, 1902

Décor: Cytisus, 1902

Clear glass, lemon-yellow inner casing, blue and rosé glass stripes and irregularly spaced patches, excellent condition

H 20 cm

Provenance: private property, Germany

Ref.: H. Ricke (ed.), Lötze, Böhmisches Glas 1880–1940, vol. 1, Munich, 1989, p. 327



12. VASE

Executed by: Lötze Witwe, Klostermühle, 1903

Décor: Phaenomen Genre 3/430

Transparent glass, irregular silver-blue splashes and threads, multi-colour iridescent, excellent original condition

H 19.5 cm

Provenance: private property, USA

Ref.: <https://www.loetz.com/decors-a-z/phaenomen-genres/phaenomen-genres-enter-here/pg-3-430> (accessed December 19, 2019)

**KOLOMAN MOSER attr.**

1868 – Vienna – 1918

**ARGENTOR-WERKE/E. BAKALOWITS SÖHNE**

Quote from Christian Witt Döring: "The range of contacts was expanded, and in addition to the already well-established ones now also includes producers from the porcelain and furniture industry such as Josef Böck, the bentwood furniture manufacturer J. & J. Kohn and the Prag-Rudnik wickerwork factory. Products made by the companies E. Bakalowits Söhne and Josef Böck are sold as Moser's design but also under the label 'SCHULE Prof. KOLO MOSER', which can be found either on independent designs by his students or on objects whose shapes were designed by Moser, but whose decorations were designed by students".



### 13. JUG WITH COOLER

**Designed by:** Koloman Moser attr., around 1900

**Executed by:** mounting: Argentor-Werke, glass: Meyr's Neffe for E. Bakalowits Söhne

**Décor:** Kristall Meteor 100

**Marked:** 3, B.E.P.W.F., 1058

Clear glass, optically blown, silver plated brass mounting, very good original condition  
H 29 cm

Ref.: Hand-drawings Archives at the Museum of Applied Arts, Vienna, design drawing inv. no. K1 13758-98; C. Thun-Hohenstein, C. Witt-Döring, E. Schmuttermeier (ed.) Koloman Moser, Universalkünstler, exhibition catalogue, MAK Vienna, Vienna, 2018, p. 50; W. Neuwirth, Argentor-Werke, Rust & Hetzel, Nachdruck des Musterbuches no. 13, 2006, p. 82

KOLOMAN MOSER attr.

1868 – Vienna – 1918

ARGENTOR-WERKE/E. BAKALOWITS SÖHNE



#### 14. LARGE PUNCH BOWL WITH LID

Designed by: Koloman Moser attr., around 1900

Executed by: mounting: Argentor-Werke, glass: Meyr's Neffe for E. Bakalowits Söhne

Décor: Kristall Meteor 100

Marked: B.E.P.W.F., 2231

Clear glass, optically blown, silver plated brass mounting, silver plating renewed, very good original condition

H 28 cm, W 41 cm, Ø 26.5 cm

Provenance: private property, Austria

Ref.: Hand-drawings Archives at the Museum of Applied Arts, Vienna, design drawing inv. no. K1 13758-98; C. Thun-Hohenstein, C. Witt-Döring, E. Schmuttermeyer (ed.) Koloman Moser, Universalkünstler, exhibition catalogue, MAK Vienna, Vienna, 2018, p. 48, 50; W. Neuwirth, Argentor-Werke, Rust & Hetzel, Nachdruck des Musterbuches no. 13, 2006, p. 82







# KARL WITZMANN SCHOOL OF PROF. JOSEF HOFFMANN

1883 – Vienna – 1952

## JAKOB SOULEK

Viennese cabinetmakers, 1060 Vienna, Mollardgasse 54



### 15. STATELY DINING-ROOM SUITE

exhibited at the Turin Exhibition "L'Esposizione internazionale d'arte decorativa moderna" 1902

consisting of: large sideboard, small sideboard, extendable dining-room table, 4 chairs, eight-bulb chandelier

Designed by: Karl Witzmann, Vienna, 1902

Executed by: Jakob Soulek

Marked on two original keys: J. Soulek, Wien

Solid mahogany and veneer, ebony, dyed to rosewood, surface professionally repolished, original marble tops, newly nickel-plated brass fittings, cut and faceted glass, upholstery and fabric renewed, excellent condition

#### 15.1. LARGE SIDEBOARD

H 175/95.5 cm, W 162 cm, D 72.5 cm

#### 15.2. SMALL SIDEBOARD

H 17.5/90 cm, W 83 cm, D 45 cm

#### 15.3. EXTENDABLE DINING TABLE

H 80 cm, D 110 cm, L 130/370 cm

opens up in four steps (each 60 cm), offers space for up to 16 people

#### 15.4. FOUR CHAIRS

H 76 cm, SH 46 cm, W 56 cm, D 51 cm

#### 15.5. EIGHT-BULB CHANDELIER

Nickel-plated brass, one lampshade glued, easily adjustable to the height of the room, excellent original condition

H 120 cm, 70 x 70 cm

Provenance: private property, Italy

Ref.: L'Arte Decorativa Moderna, 1902, Anno 2, no. 5, p. 129 ff.; Die Kunst, vol. 6., Munich 1902, p. 458











## 16. VASE TITANIA

**Executed by:** Lötze Witwe, Klostermühle, around 1906

**Décor:** Titania orange-opal with green, Genre 4212

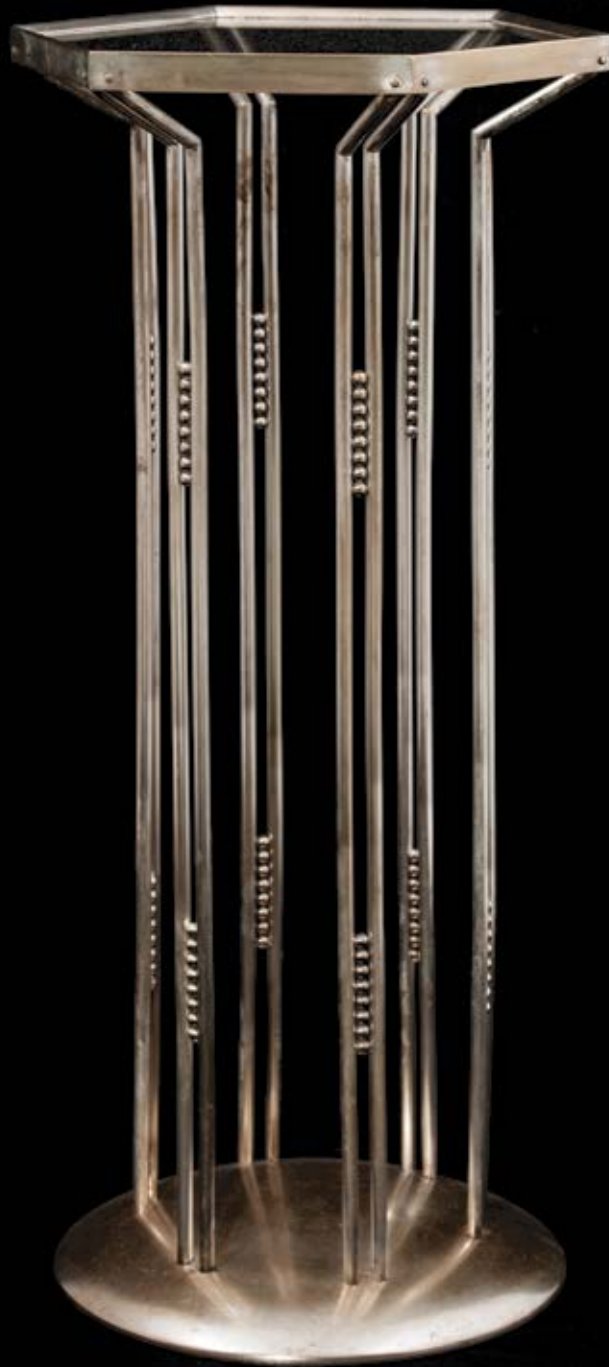
**Shape:** cylindrical vases comp. series II, prod. no. 983, 985, 987

Cylindrical vase with Titania décor in green and platinum on orange ground

**H 29 cm**

**Provenance:** private property, Germany

**HANS OFNER**  
1880 – Vienna – 1939  
**ARGENTOR**



**17. SIDE TABLE**

**Designed by:** Hans Ofner, around 1906  
**Executed by:** Argentor  
**Marked:** Argentor, A. S. in a rectangle

Silver plated brass, cleaned, original glass top with scratches, signs of usage, silver plating rubbed in places, very nice original condition

**H 78 cm, hexagonal top: 32 x 32 cm, base Ø 32.5 cm**  
Provenance: private property, Germany

**RUDOLF MARSCHALL**

1873 – Vienna – 1967

**J. & L. LOBMEYR**



**18. VASE DECORATED WITH STYLISED BLOSSOMS**

**Designed by:** Rudolf Marschall, Vienna, around 1901

**Executed by:** Wilhelm Kralik Sohn, Eleonorenhain, for J. & L. Lobmeyr, Vienna

**Marked on the base:** engraved gilded company mark

Light green glass with frosted-glass effect, etched and gilded floral decoration

**H 26 cm**

Provenance: private property, Austria

Ref.: comp. W. Neuwirth, *Blühender Jugendstil*, vol. 1, pp. 36, 163



**RICHARD TESCHNER**  
Karlsbad 1879 – 1948 Vienna  
**LÖTZ WITWE, KLOSTERMÜHLE**



**19. JUG "MERMAN"**

**Designed by:** Richard Teschner, 1906

**Executed by:** Lötze Witwe, Klostermühle, model no. 4506

**Décor:** alabaster white with jade green, around 1910

**Mould-blown jug, handle with green comb, long, green moustache, eyes and pupils of yellow/red glass**

**H 18.5 cm**

**Provenance:** private property, England

Ref.: J. Mergl/E. Ploil/H. Ricke, Lötz, Böhmisches Glas 1880–1940, Hatje Cantz Verlag, 2003, p. 189, ill. 155

KOLOMAN MOSER  
1868 – Vienna – 1918  
WIENER WERKSTÄTTE



20.1. PEN WIPE

Designed by: Koloman Moser, Vienna, 1903

Executed by: Wiener Werkstätte, around 1903, model no. M 0100

Copper, silver-plated, silver plating rubbed in places, very nice original condition

Ø 13.5 cm

Provenance: private property, Austria



Ref.: A contemporary photograph is preserved in the Wiener Werkstätte photographic archives at the Austrian Museum of Applied Arts (MAK), Vienna, inv. no. WWF 97-4-1; Wiener Werkstätte archives at the Museum of Applied Arts, Vienna, design drawing, inv. no. KI 12589-3; W. Neuwirth, Wiener Werkstätte, 1984, p. 32 f



## 20.2. CANDLESTICK

**Designed by:** Koloman Moser, Vienna, 1903

**Executed by:** Wiener Werkstätte, around 1903, model no. M 0099

Copper, silver-plated, silver plating rubbed in places, slightly stained, very nice original condition

**H 13 cm, Ø 13.5 cm**

Provenance: private property, Germany

Ref.: A contemporary photograph is preserved in the Wiener Werkstätte photographic archives at the Austrian Museum of Applied Arts (MAK), Vienna, inv. no. WWF 97-4-1; W. Neuwirth, Wiener Werkstätte, 1984, p. 33

KOLOMAN MOSER  
1868 – Vienna – 1918  
WIENER WERKSTÄTTE



## 21. VASE

**Designed by:** Koloman Moser, Vienna, 1906

**Executed by:** Wiener Werkstätte, model no. S 939

**Marked:** KM, WW, rose mark, JH (silversmith Josef Holi), Austrian hallmark - head of Diana (A for Vienna, 2 for 900/1000)

Silver, ivy pattern, glass liner replaced, very good condition

**H 20 cm**

**Provenance:** private property, Germany



Ref.: comp. Wiener Werkstätte archives at the Museum of Applied Arts, Vienna, design drawing inv. no. KI 12591-6



## 22. VASE

**Designed by:** Koloman Moser, Vienna, before 1905

**Executed by:** Wiener Werkstätte, model no. S 0370

**Marked:** KM, WW, rose mark, JH (silversmith Josef Holi), Austrian hallmark - head of Diana (A for Vienna, 2 for 900/1000)

Silver, pierced sheet metal, latticework, glass liner replaced, very good condition

**H 20.5 cm**

**Provenance:** private property, Germany



**JOSEF HOFFMANN**  
Brtnice 1870 – 1956 Vienna  
**WIENER WERKSTÄTTE**



**23. DECORATIVE SPOON**

**Designed by:** Josef Hoffmann, 1905

**Executed by:** Wiener Werkstätte, model no. S 524

**Marked:** WW, JH, Austrian hallmark - head of Diana (A for Vienna, 2 for 900/1000), rose mark, master's mark in circle

Silver, chased and delicately hammered, excellent original condition  
L 15 cm

Only two such spoons were executed. The then sales price amounted to 30 Austrian kronen per spoon.

Provenance: private property, England



Ref.: A contemporary photograph is preserved in the Wiener Werkstätte photographic archives at the Austrian Museum of Applied Arts (MAK), Vienna, inv. no. WWF 93-20-7; W. Neuwirth, Josef Hoffmann, Bestecke für die Wiener Werkstätte, Vienna, 1982, p. 160

**JOSEF HOFFMANN**  
Brtnice 1870 – 1956 Vienna  
**WIENER WERKSTÄTTE**



**24. LIDDED HONEY/JAM JAR WITH SPOON**

**Designed by:** Josef Hoffmann, Vienna, 1904/5

**Executed by:** Wiener Werkstätte, silversmith Konrad Koch

**Marked:** jar: JH, WW in oval, rose mark, master's mark KK (Konrad Koch), Austrian hallmark - head of Diana (A for Vienna, 2 for 900/1000), WW

Silver, chased, hand polished, 4 coral cabochons, small repairs, small dents, very good original condition

H 10 cm, Ø 11 cm, L 14 cm

Provenance: private property, Germany



# KOLOMAN MOSER

1868 – Vienna – 1918

J. & J. KOHN

A variant of this settee was shown at the World Exhibition in Milan in 1906.

I am not aware of any bent wood piece of furniture whose production was technically more challenging than this settee. The individual sections on the sides and the back consist of up to 16 seamlessly joined bent beech elements. They must interlink most perfectly in order to simulate a closed surface. In order to achieve such a perfect connection, a special iron mould had to be produced for each individual bent element. This required the highest level of precision. The goal was not only to excel with cutting-edge products, but also to demonstrate to the Thonet Brothers, who exhibited in the next room, that products made by J. & J. Kohn are not only top-of-the-line, but indeed more artistic and technically superior. To date, experts are only aware of one table, one armchair and this settee.



## 25.1. THREE-SEATER SETTEE

**Designed by:** Koloman Moser, around 1906

**Executed by:** J. & J. Kohn, model no. 418, from 1906 on

**Marked:** paper label: "Josef Stula Tapezierer & Dekorateur Teschen West/Schlesien, 18/IV 1907"

Bent beech and plywood, stained black, limed oak decoration, surface cleaned and slightly repolished, retouches, 4 panels with linear inlays in brass, re-upholstered, very beautiful original condition

H 76 cm, SH 42 cm, W 162 cm, D 70 cm

Sincere thanks to Giovanni Renzi for his friendly help and for providing us with the documentation.

Provenance: private collection, USA

Ref.: G. Renzi, *Il mobile moderno*, Gebrüder Thonet Vienna, Jacob & Josef Kohn, Milan, 2008, p. 186 et seq.





# MAURITIUS HERRGESELL

1883 – Vienna – 1952

## ANTON HERRGESELL



### 25.2. FALL FRONT DESK

Designed by: Mauritius Herrgesell, Vienna, around 1908/10

Executed by: Anton Herrgesell, Vienna

Marked on one lock: ANTON HERRGESELL WIEN

Solid oak and veneer, dyed black and limed, white metal fittings, interior with geometrical border inlay in maple and mahogany veneer, 4 drawers, cut and faceted glass, mirror replaced, surface cleaned, retouches, slightly repolished, very good original condition

H 195/76 cm, W 121 cm, D 38 cm

Provenance: private property, Austria

Mauritius Herrgesell studied architecture at the Vienna School of Arts and Crafts from 1901 to 1905 and was a student of Prof. Josef Hoffmann. This fall front desk's design is strongly influenced by Hoffmann's then formal language. The piece was executed in the workshop of his father, Anton Herrgesell, a very renowned Viennese cabinetmaker, who had his salesroom at one of Vienna's most prestigious addresses: Am Stephansplatz 9, just opposite the main entrance to St. Stephen's cathedral.



**JOSEF HOFFMANN**  
Brtnice 1870 – 1956 Vienna  
**J. & J. KOHN**



**26. CHAIR**  
Model "Sanatorium Purkersdorf"

Designed by: Josef Hoffmann, Vienna, before 1906  
Executed by: J. & J. Kohn, from 1906 on, model no. 322

Bent beech and plywood, surface cleaned and slightly repolished, re-upholstered,  
very good original condition

H 99 cm, SH 46 cm, W 44 cm, D 42 cm  
Provenance: private property, Austria

Ref.: J. & J. Kohn sales catalogue, 1906, p. 65; The Art Revival in Austria, The Studio, special number 1906, ill. C 10; G. Renzi, Il mobile moderno, Gebrüder Thonet Vienna, Jacob & Josef Kohn, Milan, 2008, p. 64 ff



**JOSEF HOFFMANN**  
Brtnice 1870 – 1956 Vienna  
**WIENER WERKSTÄTTE**



**27. A PAIR OF TABLE LAMPS**

**Designed by:** Josef Hoffmann, Vienna, 1905  
**Executed by:** Wiener Werkstätte, model no. M 0406

Nickel-plated brass, upper plate and silk shade with rectangular lead weights replaced, excellent condition

**H 39 cm**  
Provenance: estate of Leopold Blauensteiner  
Photo: veranda of Purkersdorf Sanatorium

Ref.: Wiener Werkstätte archives at the Museum of Applied Arts, Vienna, model no. G 0406, photo volume WWF 97-17-3



# JOSEF HOFFMANN/KOLOMAN MOSER

Brtnice 1870 – 1956 Vienna/1868 – Vienna – 1918

WIENER WERKSTÄTTE/JOHANN BACKHAUSEN & SÖHNE



## 28. BOX

**Designed by:** Josef Hoffmann (shape and fabric); Koloman Moser (marbled paper)

**Executed by:** Wiener Werkstätte, fabric: Backhausen, Dessin no. 5055, around 1905

**Marked:** WIENER WERK STÄTTE (3 lines), gold print

Cardboard, fabric, marbled paper, signs of wear, very nice original condition

**H 10 cm, B 32.5 cm, T 22 cm**

Provenance: private property, Austria

Ref.: Backhausen Archives, object no. BA03709, Dessin no. 5055, Josef Hoffmann, 1904; comp. Archives of Textiles and Carpets at the Museum of Applied Arts, Vienna, inv. no. T 13234



# JOSEF HOFFMANN/KUNSTSCHAU 1908

Brtnice 1870 – 1956 Vienna

J. & J. KOHN



## 29. SEVEN-BALL CHAIR

Designed by: Josef Hoffmann, Vienna, 1907/08

Executed by: J. & J. Kohn, from 1908 on, model no. 371

Bent beechwood, stained, surface cleaned and slightly repolished, new upholstery covered with an original Jugendstil fabric, excellent original condition

H 108 cm, SH 46 cm, W 44 cm, D 44 cm

Provenance: private property, Germany

Ref.: J. & J. Kohn sales catalogue, 1909; Moderne Bauformen VII, 1908, p. 368; G. Renzi, Il mobile moderno, Gebrüder Thonet Vienna, Jacob & Josef Kohn, Milan, 2008, pp. 206 f.; Fremdkörper (ed.), Moderne Möbel, 150 Jahre Design, 2009, p. 658



OTTO PRUTSCHER  
1880 – Vienna – 1949  
LÖTZ WITWE



### 30. VASE

**Designed by:** Otto Prutscher, around 1908

**Executed by:** Lötzwitwe, Klostermühle

**Décor:** Perl Glass

**Shape:** 1908, prod. no. II-5517

Cobalt blue glass, covered by a layer of transparent glass containing tiny silver balls

**H 17.7 cm**

**Provenance:** private property, Austria

Ref.: J. Lněničková, Loetz, Series II, Paper Patterns for Glass from 1900 to 1914, 2011, p. 539; Passauer Glasmuseum, Das böhmische Glas, vol. IV, cat. no. 166, p. 103; Moderne Bauformen, VII, 1908, p. 387



31. VASE

Executed by: Lötzwitwe, Klostermühle, around 1912

Décor: Perl Glass, Ausführung/execution 140

Cobalt blue glass, covered by a layer of transparent glass containing tiny silver balls, excellent condition

H 12.5 cm

Provenance: private property, USA

Ref.: <https://www.loetz.com/decors-a-z/ausfuehrungen/ausfuehrung/ausf-140> (accessed December 19, 2019)

**MARCEL KAMMERER** attr.  
Vienna 1878 – 1959 Montreal  
**GEBRÜDER THONET**



### 32. A PAIR OF DRAWING-ROOM TABLES

**Designed by:** Marcel Kammerer attr., Vienna, 1906

**Executed by:** Gebrüder Thonet, model no. 8042, from 1907 on

Beech and bent beechwood, dyed to rosewood, professionally repolished, polished brass fittings, excellent condition

**H 80 cm, Ø 58 cm**

Provenance: private property, Austria

Ref.: sales cat. Gebrüder Thonet, 1 Sep 1904, supplement 1 Oct 1907, ill. p. 143; Fremdkörper (ed.), Moderne Möbel, 150 Jahre Design, 2009, p. 667; G. Renzi, Il mobile moderno, Gebrüder Thonet Vienna, Jacob & Josef Kohn, Milan, 2008, p. 194





### 33. SIX CHAIRS

Designed and executed by: Gebrüder Thonet, Vienna, 1904, model no. 511

Benit beech, dyed to rosewood, surface professionally repolished, re-upholstered in very durable microfiber fabric, excellent condition

H 99 cm, SH 47 cm, W 43 cm, D 41 cm

Provenance: private property, Germany



### 34. A PAIR OF FLOWERSTANDS

**Designed by:** Josef Hoffmann attr., Vienna around 1906

**Executed by:** J. & J. Kohn

**Marked:** remains of paper label J. & J. Kohn

Beech, bent beech and plywood, dyed to rosewood, surface professionally repolished, very good condition

H 101.5 cm, Ø 34.5 cm, H 89.5 cm, ø 34.5 cm

Provenance: private property, France and Austria



### 35. COAT AND HAT STAND

Designed and executed by: Gebrüder Thonet, Vienna, 1905, model no. 10414  
Bent beechwood, dyed to mahogany, surface cleaned and slightly repolished, 12 coat and hat hooks, metal tray renewed,  
very good condition  
H 206 cm, W 47/69 cm, D 47/69 cm  
Provenance: private property, Austria

**JOSEF HOFFMANN**  
Brtnice 1870 – 1956 Vienna  
J. & J. KOHN

**GUSTAV SIEGEL**  
1880 – Vienna – 1968  
J. & J. KOHN



### 36.1. A PAIR OF CHAIRS

**Designed by:** Josef Hoffmann, Vienna, around 1905  
**Executed by:** J. & J. Kohn, model no. 414  
**Marked:** original paper labels J. & J. Kohn Wien

Bent beechwood, dyed to mahogany, surface professionally repolished, upholstery and fabric renewed, good condition  
H 89 cm, SH 46 cm, W 41 cm, D 50 cm

Provenance: private property, Italy

Ref.: sales catalogue J. & J. Kohn, 1916, p. 14

### 36.2. THREE-LEGGED SIDE TABLE

**Designed by:** Gustav Siegel, Vienna, after 1900  
**Executed by:** J. & J. Kohn, model no. 326 1/2/T  
Bent beechwood, dyed to rosewood, surface professionally repolished, cast brass fittings, fabric on top renewed, excellent condition

H 70 cm, ø 54.5 cm  
Provenance: private property, Austria

Ref.: Italian sales catalogue of J. & J. Kohn, 1906, p. 72

Ref.: sales catalogue J. & J. Kohn, 1916, p. 14

# EMANUEL JOSEF MARGOLD attr.

Vienna 1889 – 1962 Bratislava



## 37. CABINET-TOP DISPLAY CASE

Designed by: Emanuel Josef Margold attr.,  
Vienna around 1910

Mahogany solid and veneer, dyed to walnut, surface cleaned and slightly repolished, gilded carved wooden feet, gilded brass applications, cut faceted glass, set in brass, 12 small panes on coloured marble glass, very nice original condition  
First-class Viennese craftsmanship  
H 82 cm, W 81 cm, D 28 cm

Provenance: private property, Germany



# ADOLF JOSEF POHL

Vienna 1872 – 1930 Deutsch Altenburg



## 38. BUST OF A WOMAN

around 1908

**Signed:** A. Pohl

Bronze, patinated, very nice original patina, excellent condition

**H 35 cm**

Provenance: private property, Germany

Ref.: Hans Vollmer (ed.), Allgemeines Lexikon der bildenden Künstler des XX. Jahrhunderts, Leipzig 1930, vol 27, p. 190



# RICHARD LUKSCH

Vienna 1872 –1936 Hamburg



## 39. EVE AFTER THE EXPULSION FROM PARADISE

Designed and executed by: Richard Luksch, 1925

Signed: RL 1925

Bronze, patinated

Excellent original condition

H 43 cm

Provenance: private property, Germany

Ref.: U. Thieme/F. Becker (ed.), Allgemeines Lexikon der bildenden Künstler, Von der Antike bis zur Gegenwart, Leipzig, vol. XXIII, p. 462



**JOSEF HOFFMANN**  
Brtnice 1870 – 1956 Vienna  
**WIENER WERKSTÄTTE**



**40. VASE**

**Designed by:** Josef Hoffmann, Vienna, 1908

**Executed by:** Isis Werke, Nuremberg, for Wiener Werkstätte, model no. M 687, M1000

**Marked:** WW

Tin cast and nickel-plated, brass base, very good original condition

**H 13.5 cm**

Sincere thanks to Mr. H. S. for this information.

Provenance: private property, Germany

Ref.: Wiener Werkstätte archives at the Austrian Museum of Applied Arts, Vienna, design drawing inv. no. K1 11985-28, model no. M 687;  
The Studio, 1911, vol. 52, p. 188; K. Goubert, Zilvermuseum Sterckshof (ed.), Wiener Werkstätte Silver and Belgian Silver Design, 2010, p. 55





**JOSEF HOFFMANN**  
Brtnice 1870 – 1956 Vienna  
**WIENER WERKSTÄTTE**



**41.1. NAPKIN RING**

**Designed by:** Josef Hoffmann, Vienna, before 1914  
**Executed by:** Wiener Werkstätte,  
model no. S 3339 - S di 45  
**Marked:** JH, WW, 900, Austrian hallmark - head of  
hoopoe (W for Vienna, 2 for 900/1000)  
**H 1.4 cm, Ø 5 cm**  
**Provenance:** Jacqueline Fowler, Connecticut

Ref.: A contemporary photograph is preserved in the Wiener Werkstätte photographic archives at the Austrian Museum of Applied Arts (MAK), Vienna, inv. no. WWF 189-11, model no. S 3339 - S di 45; Wiener Werkstätte archives at the Museum of Applied Arts, Vienna, design drawing, inv. no. KI 12083-2-2;

**41.2. NAPKIN RING**

**Designed by:** Josef Hoffmann, Vienna, around 1912  
**Executed by:** Wiener Werkstätte  
**Unmarked**  
Silver, chased, bead-and-reel decoration, very good  
original condition  
**H 2 cm, W 5 cm, D 4 cm**  
**Provenance:** Jacqueline Fowler, Connecticut

Ref.: comp. Wiener Werkstätte archives at the Museum of Applied Arts, Vienna, design drawing inv. no. KI 11997-23-1

KOLOMAN MOSER  
1868 – Vienna – 1918  
WIENER WERKSTÄTTE



42. SMALL SALT DISH

**Designed by:** Koloman Moser, Vienna, 1904

**Executed by:** Wiener Werkstätte, 1904, model no. S 306

**Marked:** KM, WW, rose mark, Austrian hallmark – head of Diana (A for Vienna, 3 for 800/1000); small A, AG in circle (master's mark for Augustin Grötzbach)

Silver, chased, lapislazuli, glass liner, excellent original condition

**H 3.5 cm, Ø 5.7 cm**

This piece was executed in 1904; from 1905 on the frieze was changed.

Sincere thanks to Mr. H. S. for this information.

Provenance: private property, Canada



Ref.: A contemporary photograph is preserved in the Wiener Werkstätte photographic archives at the Austrian Museum of Applied Arts (MAK), Vienna, inv. no. WWF 93-8-7; Wiener Werkstätte archives at the Museum of Applied Arts, Vienna, design drawing inv. no. KI 12571-3; W. Neuwirth, Wiener Werkstätte Registered Trade Marks I, Vienna 1985, p. 172

**JOSEF HOFFMANN**  
Brtnice 1870 – 1956 Vienna  
**WIENER WERKSTÄTTE**



**43. ELECTRIC BELL PUSH**

**Designed by:** Josef Hoffmann, Vienna, before 1905

**Executed by:** Wiener Werkstätte, model no. S 579

**Marked:** WIENER WERK STÄTTE (3 lines), WW, Austrian hallmark – head of Diana (A for Vienna, 2 for 900/1000)

Silver, malachite, old electric cord

H 4 cm, Ø 8 cm

Sincere thanks Mr. H. S. for this information.

Provenance: private property, Austria

Ref: Wiener Werkstätte archives at the Museum of Applied Arts, Vienna, design drawing, inv. no. KI 12170-1-1

**JOSEF HOFFMANN**  
Brtnice 1870 – 1956 Vienna  
**WIENER WERKSTÄTTE**



**44. INKWELL**

**Designed by:** Josef Hoffmann, around 1908

**Executed by:** Wiener Werkstätte, model no. S 1238

**Marked:** WW, Austrian hallmark - head of Diana (A for Vienna, 2 for 900/1000)

Silver, ivy-leaf pattern, glass liner missing, very nice original condition

**H 6 cm, Ø 8 cm**

Sincere thanks Mr. H. S. for this information.

Provenance: private property, Germany

Ref.: A contemporary photograph is preserved in the Wiener Werkstätte photographic archives at the Austrian Museum of Applied Arts (MAK), Vienna, inv. no. WWF 94-65-7; Wiener Werkstätte archives at the Museum of Applied Arts, Vienna, design drawing inv. no. KI 12068-12

**JOSEF HOFFMANN**  
Brtnice 1870 – 1956 Vienna  
**WIENER WERKSTÄTTE**



**45. CIGARETTE DISPENSER**

**Designed by:** Josef Hoffmann

**Executed by:** Wiener Werkstätte, Vienna around 1908, model no. S 1102

**Marked:** WW, Austrian hallmark - head of Diana (A for Vienna, 2 for 900/1000)

Silver ivy-leaf pattern, original glass liner, front part smoothed down, small chips, very good condition

**H 9.5 cm**

**Provenance:** private property, Austria

Ref.: A contemporary photograph is preserved in the Wiener Werkstätte archives at the Austrian Museum of Applied Arts (MAK), Vienna, inv. no. WWF 113-53-7; Deutsche Kunst und Dekoration, XXIII, 1909, p. 178

**JOSEF HOFFMANN**  
Brtnice 1870 – 1956 Vienna  
**WIENER WERKSTÄTTE**



**46. BREAD BASKET**

**Designed by:** Josef Hoffmann, Vienna, before 1909

**Executed by:** Wiener Werkstätte, before 1909, model no. S 1517

**Marked:** JH, WW, WIENER WERKSTÄTTE, Austrian hallmark - head of Diana (A for Vienna, 2 for 900/1000), rose mark, JH in circle (silversmith's mark of Josef Holi)

Silver, silver ivy-leaf pattern, ivory handle, very good original condition

**H 17.5 cm, W 24.5 cm, D 13 cm**

**Provenance:** private property, Netherlands



Ref.: A contemporary photograph is preserved in the Wiener Werkstätte photographic archives at the Museum of Applied Arts (MAK), Vienna, inv. no. WWF 94-117-4; Wiener Werkstätte archives at the Museum of Applied Arts, Vienna, design drawing, inv. no. KI 12033-25

**JOSEF HOFFMANN**  
Brtnice 1870 – 1956 Vienna  
**WIENER WERKSTÄTTE**



**47. FRUIT BASKET**

**Designed by:** Josef Hoffmann,

**Executed by:** Wiener Werkstätte, Vienna, comp. model no. S 1372

**Marked:** WIENER WERK STÄTTE (3 lines), rose mark, JH, WW, master's mark AE (Adolf Erbrich), Austrian hallmark - head of Diana (A for Vienna, 2 for 900/1000)

Silver, chased and hammered, hand polished, bead-and-reel decoration, excellent original condition

**H 16.5 cm, 24 cm x 19.5 cm**

Provenance: Jacqueline Fowler, Connecticut

Ref.: Contemporary photographs are preserved in the Wiener Werkstätte archives at the Austrian Museum of Applied Arts (MAK), Vienna, inv. nos. WWF 94-106-2; WWF 94-106-1; WWF 187-88; Wiener Werkstätte archives at the Austrian Museum of Applied Arts (MAK), Vienna, design drawing inv. no. KI 12033-22; Deutsche Kunst und Dekoration, XXV, 1910, p. 373

**JOSEF HOFFMANN**  
Brtnice 1870 – 1956 Vienna  
**WIENER WERKSTÄTTE**



**48. FRUIT BOWL**

**Designed by:** Josef Hoffmann, Vienna around 1920

**Executed by:** Wiener Werkstätte, around 1923, model no. S 4030

**Marked:** JH, WW, WIENER WERKSTÄTTE, rose mark, Austrian hallmark - head of Diana (A for Vienna, 2 for 900/1000), a (hallmark for Vienna)

**Silver, chased and hammered, bead-and-reel decoration, very good original condition**

**H 6.5 cm, W 24.5 cm, D 21 cm**

**Provenance:** private property, Germany

**Ref.:** Wiener Werkstätte archives at the Museum of Applied Arts, Vienna, design drawing inv. no. KI 11998-23



**JOSEF HOFFMANN**  
Brtnice 1870 – 1956 Vienna  
**WIENER WERKSTÄTTE**



**49. OVAL CENTREPIECE**

**Designed by:** Josef Hoffmann, before 1913

**Executed by:** Wiener Werkstätte, model no. S 3089

**Marked:** JH, WW, WIENER WERKSTÄTTE, Austrian hallmark - head of Diana (A for Vienna, 2 for 900/1000), A (Austrian hallmark for Vienna)

**Dedication on stand:** Karl, Ashe, Egon, Adolf, 13. OKTOBER 1917

Silver, chased and hammered, bead-and-reel decoration with small damages on the rim, very good original condition

**H 15 cm, W 29 cm, D 24 cm**

**Provenance:** private property, Germany

Ref.: Wiener Werkstätte archives, Museum of Applied Arts, Vienna, design drawing inv. no. KI 12003-14-1

**JOSEF HOFFMANN**  
Brtnice 1870 – 1956 Vienna  
**WIENER WERKSTÄTTE**



**50. VASE**

**Designed by:** Josef Hoffmann, before 1912

**Executed by:** Wiener Werkstätte, model no. M 2045

**Marked:** JH, WIENER WERK STÄTTE (3 lines), rose mark, JH in circle (silversmith's mark of Josef Husnik)  
Alpacca, polished, bead-and-reel decoration, very good original condition

**H 20 cm, Ø 18.5 cm**

According to the design drawing, two pieces were executed in alpacca and two in brass.

Provenance: private property, Austria



Ref.: A contemporary photograph is preserved in the Wiener Werkstätte photographic archives at the Austrian Museum of Applied Arts (MAK), Vienna, inv. no. WWF 98-66-2; Wiener Werkstätte archives at the Museum of Applied Arts, Vienna, design drawing inv. no. KI 11975-6



## OTTO PRUTSCHER

1880 – Vienna – 1949

## WIENER WERKSTÄTTE

### 51. CEILING LAMP

Designed by: Otto Prutscher, 1912

Executed by: Wiener Werkstätte

Brass, chased, ornamental floral decoration, chased bead-and-reel decoration, original blown white opaque glass shade, black wooden ceiling base plate, excellent original condition

H 24 cm, Ø 28.5 cm

Provenance: Villa Rothberger, Baden near Vienna; purchased from former owner

# JOSEF HOFFMANN/PHILIPP HÄUSLER

Brtnice 1870 – 1956 Vienna

WIENER WERKSTÄTTE



## 52. GOBLET

**Designed by:** Josef Hoffmann/Philipp Häusler, design drawing dated 22 June 1923

**Executed by:** Wiener Werkstätte, work no. A va 66 (glass)

**Marked:** WIENER WERK STÄTTE (3 lines), JH, Made in Austria  
Alpacca, silver plated, chased and hammered

**H 28.5 cm, Ø 16 cm**

**Provenance:** private collection, Austria

Ref.: Wiener Werkstätte sales cat., 1928, p. 802; Wiener Werkstätte archives at the Museum of Applied Arts, Vienna, design drawing inv. no. K 11967-18

# JOSEF HOFFMANN/PHILIPP HÄUSLER

Brtnice 1870 – 1956 Vienna

WIENER WERKSTÄTTE



## 53. A PAIR OF GOBLETS

**Designed by:** Josef Hoffmann/Philipp Häusler, design drawing dated 22 June 1923

**Executed by:** Wiener Werkstätte, work no. A va 66 (glass)

**Marked:** WIENER WERK STÄTTE (3 lines), JH, MADE IN AUSTRIA

Brass, chased and hammered, hand polished, excellent original condition

**H 30 cm**

Provenance: private property, USA

Ref.: Wiener Werkstätte sales cat., 1928, p. 802; Wiener Werkstätte archives at the Museum of Applied Arts, Vienna, design drawing inv. no. KI 11967-18



54. VASE

Executed by: Lötze Witwe, Klostermühle, after 1916

Décor: Ausführung/execution 178

Transparent glass, regular silver-yellow threads, broken tip to one node at rim, excellent condition

H 17 cm

Provenance: private property, USA

Ref.: <https://www.loetz.com/decors-a-z/ausfuehrungen/ausfuehrung/ausf-178> (accessed December 19, 2019)



### 55. COFFEEPOT AND COVERED SUGAR BOWL

Designed by: Josef Hoffmann, Vienna, before 1923

Executed by: Wiener Werkstätte, model nos. M 3660 (coffeepot), M 3662 (sugar bowl)

Marked: JH, WIENER WERKSTÄTTE (3 lines), 1

Brass, chased and hammered, silver-plated interior, Macassar ebony (?) handle, very nice original condition

Coffeepot: H 16.4 cm, Sugar bowl: H 13.4 cm

Provenance: private property, Austria

Ref.: Wiener Werkstätte drawing archives at the Museum of Applied Arts, Vienna, inv. no. KI 12051-19, model no. M 3660, M 3662; A contemporary photograph is preserved in the Wiener Werkstätte archives at the Austrian Museum of Applied Arts (MAK), Vienna, inv. no. WWF 114-2-2, mode nos. M 3660, M 3662; Wiener Werkstätte sales catalogue, 1923, p. 7, M se 3



**CHRISTA EHRLICH**

Vienna 1903 – 1995 The Hague

**JM VAN KEMPEN**



## 56. TWO GOBLETS

Designed by: Christa Ehrlich, around 1925

Executed by: JM van Kempen, Voorschoten; Christa Ehrlich, 1928/29

Marked: Dutch hallmark – lion (for 833/1000), V above a crescent moon (Voorschoten hallmark), S for 1928, T for 1929, CE for Christa Ehrlich

Silver, chased flower decor, excellent condition

H 12.5 cm Ø 15 cm

H 8.5 cm Ø 10 cm

Provenance: private property, Germany

Ref.: Tardy, Les Poinçons de Garantie Internationaux pour l'Argent, 11e Edition, Paris, 1975



CHRISTA EHRLICH

Vienna 1903 – 1995 The Hague

JM VAN KEMPEN



## 57. NINE BOWLS

**Designed by:** Christa Ehrlich, around 1925

**Executed by:** JM van Kempen, Voorschoten; Christa Ehrlich, 1927/28

**Marked:** Dutch hallmark – lion (for 833/1000), V above a crescent moon (Voorschoten hallmark), R for 1927, S for 1928, CE for Christa Ehrlich, Minerva head with the regional assay office letter C in its helmet (for the assay office of The Hague), key - export mark

Silver chased, excellent condition

**Smallest bowls:** H 1.5 cm, Ø 6.5 cm; **Large centrepiece:** H 6.6 cm, Ø 17.5 cm

**Provenance:** private property, Switzerland

Ref.: Tardy, Les Poinçons de Garantie Internationaux pour l'Argent, 11e Edition, Paris, 1975

MARIA LIKARZ attr.  
Przemyśl 1893 – 1971 Rome  
WIENER WERKSTÄTTE attr.



### 58. FEMALE HEAD

Designed and executed by: Maria Likarz attr. for Wiener Werkstätte, 1929  
Monogrammed and dated on base: 1929, ML

Copper, enamel paint, excellent original condition

H 15.8 cm, W 10.2 cm  
Provenance: private property, USA

**GUDRUN BAUDISCH**  
Pöls 1906 – 1982 Hallein  
**WIENER WERKSTÄTTE**



**59. DOUBLE HEAD**

Designed by: Gudrun Baudisch  
Executed by: Wiener Werkstätte, 1929, model no. 584  
Marked: GB, WW, MADE IN AUSTRIA, 584

Ceramic, red clay, white and colour glazed, very good original condition

H 25 cm  
Provenance: private property, Austria

**JOSEF HOFFMANN**  
Brtnice 1870 – 1956 Vienna  
**WIENER WERKSTÄTTE**



**60. SILVER TEA SET**

consisting of: teapot, creamer, covered sugar bowl, sugar tongs, tray

**Designed by:** Josef Hoffmann, Vienna,

**Executed by:** Wiener Werkstätte, 1918, model nos. S 4074, S 4076, S 4077, S 4078, S 4079

**Marked:** JH, rose mark, WIENER WERK STÄTTE (3 lines), WW, Austrian hallmark - head of Diana (A for Vienna, 2 for 900/1000), 900, A (hallmark for Vienna)

Silver chased and hammered, fine bead-and-reel decoration, finely carved ivory handles, finest quality of silversmith craftsmanship, tray repaired on base, four minor defects on the raised edge (under the rim), except for the tray very good original condition

**Tray:** W 42 cm, D 37 cm; **Teapot:** H 17 cm; **Sugar bowl:** H 14 cm;

**Sugar tongs:** L 11 cm; **Creamer:** H 11 cm

**Provenance:** private property, Spain

Ref.: A contemporary photograph is preserved in the Wiener Werkstätte archives at the Austrian Museum of Applied Arts (MAK), Vienna, inv. no. WWF 96-189-5; Wiener Werkstätte archives at the Austrian Museum of Applied Arts, Vienna, design drawing inv. no. KI 12055-23, KI 12055-26, KI 12055-27-1



# JOSEF HOFFMANN

Brtnice 1870 – 1956 Vienna

## JOHANN BACKHAUSEN & SÖHNE



### 61. CARPET

**Designed by:** Josef Hoffmann for Palais Stoclet, 1907, model bellflower  
**Executed by:** Backhausen & Söhne, Vienna

Machine-woven carpet, wool, minor defects due to moth damage, washed and surface shorn approx. 1 mm in the carpet pile to revive the partially very faded surface

**Pattern repeat length:** 47 cm, **Carpet roll width:** 88 cm, **lengths:** 232 cm, 144 cm, 113 cm

Josef Hoffmann designed this carpet in 1907 for Palais Stoclet. It was also used in various rooms in Villa Ast and to equip a number of other residential apartments. Gustav Klimt, for instance, used it for his studio in Feldmühlgasse in Vienna's 13th district. Our three carpets were produced in 1912 for a different project.

**Provenance:** private property, Austria

# LILLY STEINER

Vienna 1884 – 1962 Paris



## 62. PORTRAIT

Signed on lower right: Lilly Steiner

Oil on canvas, cleaned, some small retouches, varnished, newly framed, very good original condition

Picture size: H 100 cm, W 70 cm

Provenance: private property, Austria

Ref.: U. Thieme/F. Becker (ed.), Allgemeines Lexikon der bildenden Künstler, Von der Antike bis zur Gegenwart, Leipzig, vol. XXXI, p. 558

**FRANZ HAGENAUER**

1906 – Vienna – 1986

**WERKSTÄTTE HAGENAUER**



**63. A PAIR OF EXTRAORDINARY EIGHT-BRANCHED CANDELABRA**

**Designed by:** Franz Hagenauer, Vienna, basic design from 1929

**Executed by:** Werkstätte Hagenauer, Vienna, around 1960

**Marked:** Hagenauer Wien, WHW, Made in Austria  
Brass, nickel plated, eight branches







H 45.5 cm, Ø 32 cm

The candelabra's design is based on a three-branched model from 1929.  
Provenance: private property, USA



**STEPHAN BALKENHOL**  
born in Fritzlar (Germany) 1957



**64. WOMAN**

**Designed and executed by:** Stephan Balkenhol, 2000

Carved from a solid block of mahogany, set in different colours, cracks, after consultation with artist base freshly painted in ivory black on acrylic base

**H 194 cm, W 57.5 cm, D 57.5 cm**

Provenance: private property, Switzerland

CARL AUBÖCK  
1900 – Vienna – 1957  
WERKSTÄTTE CARL AUBÖCK



65. CHESS SET

Designed by: Carl Auböck, Vienna, before 1957  
Executed by: Werkstätte Carl Auböck, model nos. 42744/5007  
Leather, horn, excellent original condition

30 x 29.5 cm, max. H 8.5 cm  
Provenance: private property, Austria

Ref.: Die Arbeiten der Werkstätte Carl Auböck – fotografiert von 1948 – 2005, 2005, IV/12

# INDEX

KÜNSTLER UND FIRMEN / ARTISTS AND COMPANIES	Kat. Nr. / cat. no.	Seite / page
ARGENTOR .....	13-14, 17.....	18-19, 27
AUBÖCK, Carl .....	65.....	80
BACKHAUSEN & SÖHNE, Johann .....	28, 61.....	40, 74
BAKALOWITS, E. SÖHNE.....	3-4, 13-14.....	8-9, 18, 19
BALKENHOL, Stephan .....	64.....	78-79
BAUDISCH, Gudrun .....	59.....	71
EHRlich, Christa .....	56-57.....	68-69
FRIEDRICH OTTO SCHMIDT.....	9-10.....	14-15
GEBRÜDER THONET.....	32-33, 35.....	44-45, 47
HAGENAUER, Franz .....	63.....	76-77
HÄUSLER, Philipp .....	52-53.....	64-65
HERRGESELL, Anton.....	25.2.....	37
HERRGESELL, Maurifius .....	25.2.....	37
HOFFMANN, Josef.....	23-24, 26-29, 34, 36.1, 40-41.2, 43-50, 52-53, 55, 60-61.....	34-35, 38-41, 46, 48, 52-53, 55-62, 64-65, 67, 72-74
HOFSTÖTTER, Franz .....	5-6.....	10-11
JM VAN KEMPEN.....	56-57.....	68-69
KAMMERER, Marcel.....	32.....	44
KLIMT, Georg .....	1.....	5
KOHN, J. & J.....	25.1-26, 29, 34-36.2.....	36, 38, 41, 46, 48
KUNSTSCHAU 1908.....	29.....	41
LIKARZ, Maria .....	58.....	70
LOBMEYR, J. u. L. ....	18.....	28
LOOS, Adolf .....	9-10.....	14-15
LÖTZ WITWE KLOSTERMÜHLE.....	3-8, 11-12, 16, 19, 30-31, 54.....	8-13, 16-17, 26, 29, 42-43, 66
LUKSCH, Richard.....	39.....	51
MARGOLD, Emanuel Josef .....	37.....	49
MARSHALL, Rudolf.....	18.....	28
MEYR'S NEFFE .....	13-14.....	18-19
MOSEK, Koloman.....	13-14, 20.1-22, 25.1, 28, 42.....	18-19, 30-33, 36, 40, 54
OFNER, Hans .....	17.....	27
POHL, Adolf Josef.....	38.....	50
PRUTSCHER, Otto .....	30, 51.....	42, 63
SCHULE PROF. JOSEF HOFFMANN.....	15.....	20-25
SIEGEL, Gustav .....	36.2.....	48
SOULEK, Jakob.....	15.....	20-25
STEINER, Lilly.....	62.....	75
TESCHNER, Richard.....	19.....	29
VAN DE VELDE, Henry.....	2.....	6-7
WERKSTÄTTE CARL AUBÖCK.....	65.....	80
WERKSTÄTTE HAGENAUER.....	63.....	76-77
WIENER WERKSTÄTTE.....	20.1-24, 27-28, 40-53, 55, 58-60.....	30-35, 39-40, 52-65, 67, 70-73,
WITZMANN, Karl .....	15.....	20-25







bel etage